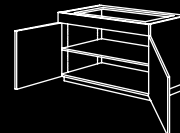
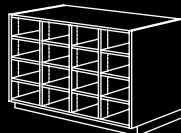
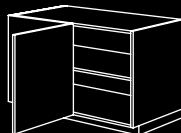
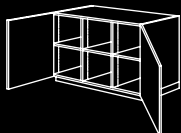
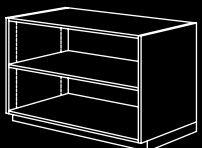




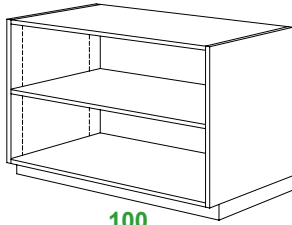
CABINET DESIGN GUIDE

The cabinet design samples on the following pages are subdivided as follows:

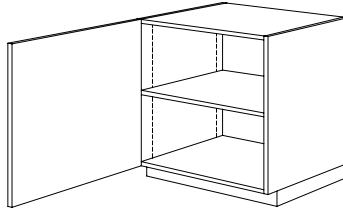
Base Cabinets w/o drawers	100 series
Base Cabinets w/ drawers	200 series
Wall Hung Cabinets	300 series
Tall Storage Cabinets	400 series



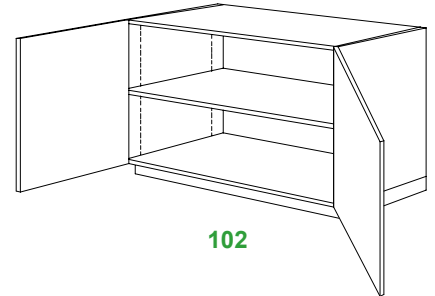
100 SERIES - Base Cabinets w/o Drawers



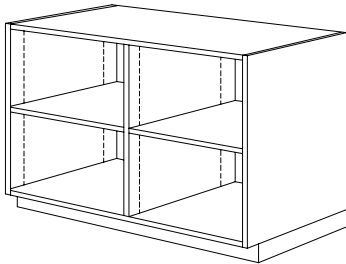
100
Open



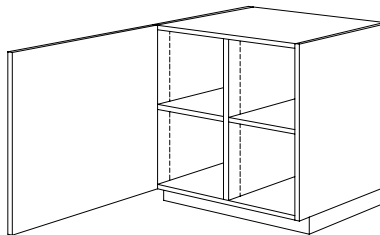
101



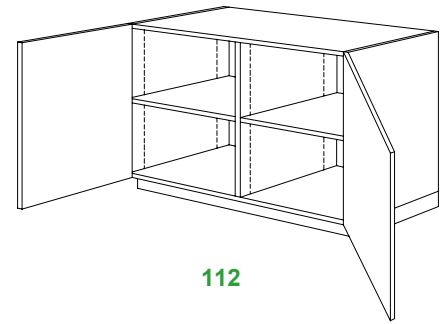
102



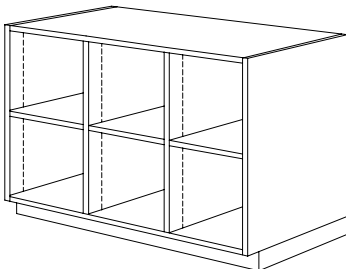
110
Open



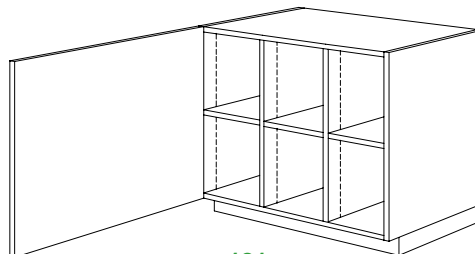
111



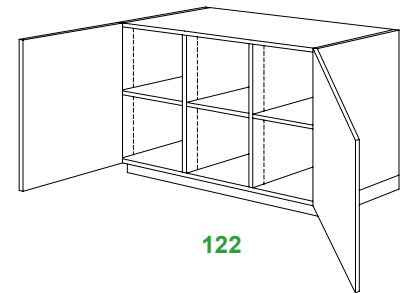
112



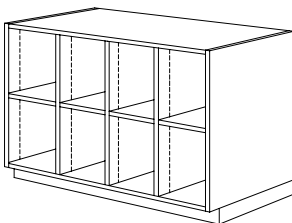
120
Open



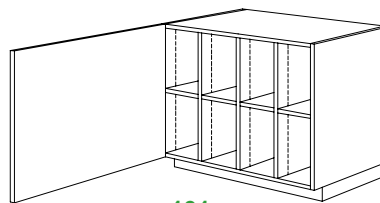
121



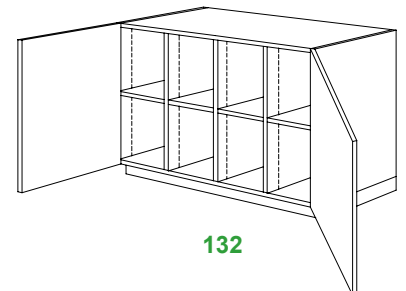
122



130
Open

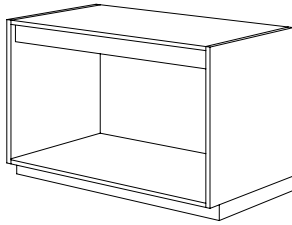


131



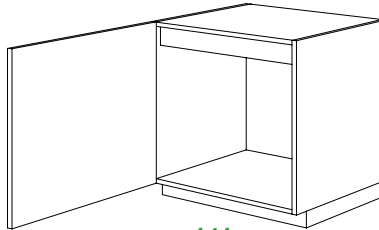
132

100 SERIES - Base Cabinets w/o Drawers



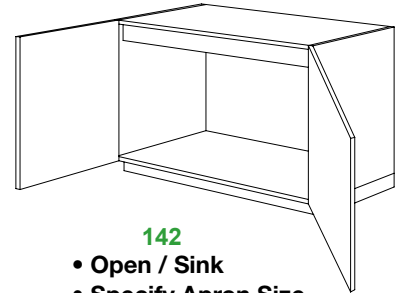
140

- Open / Sink
- Specify Apron Size
- Apron Loose



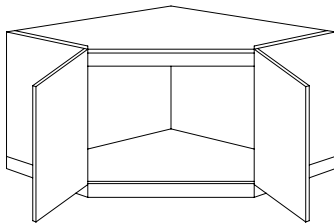
141

- Open / Sink
- Specify Apron Size
- Apron Loose



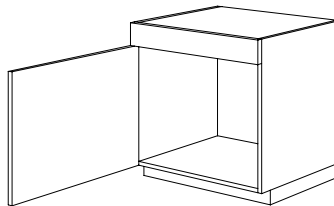
142

- Open / Sink
- Specify Apron Size
- Apron Loose



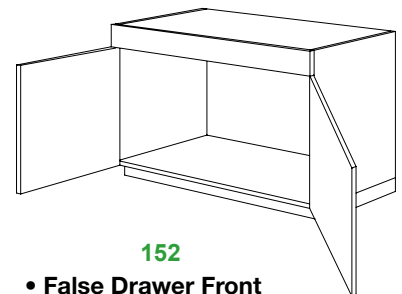
148

- Apron behind Doors
- Specify Apron Size
- Apron Loose



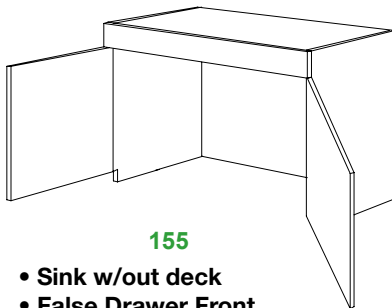
151

- Sink
- False Drawer Front
- Includes Drawer Apron



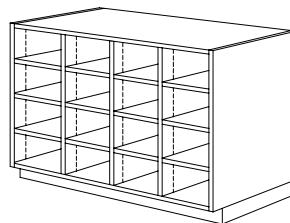
152

- False Drawer Front
- Includes Drawer Apron



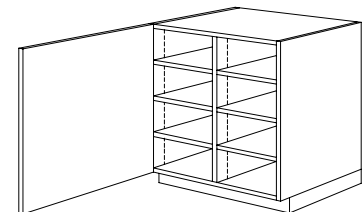
155

- Sink w/out deck
- False Drawer Front
- Includes Drawer Stretcher

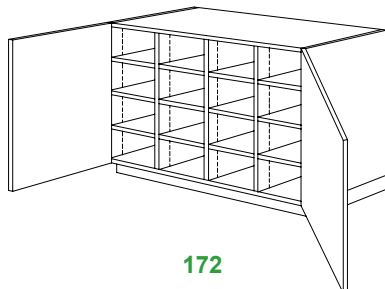


170

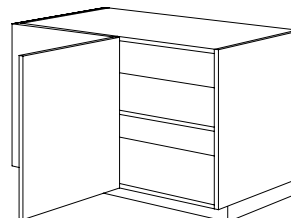
Drawer



171



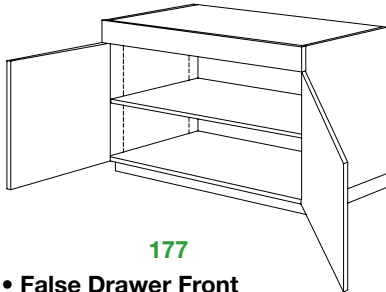
172



176

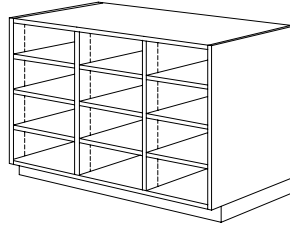
- Blind Corner
- Specify Blind Panel Width
- Specify Blank Panel Side (LH or RH)
- Top Drawer Option Available

100 SERIES - Base Cabinets w/o Drawers

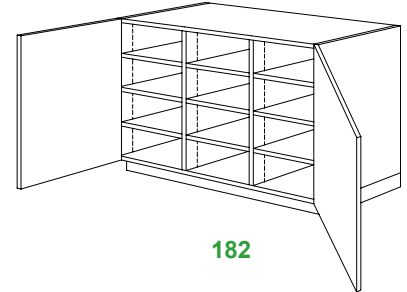


177

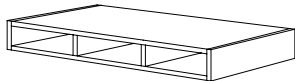
- False Drawer Front
- Includes Drawer Stretcher



180

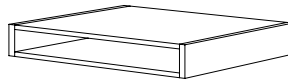


182



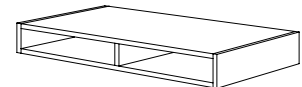
192

- Storage Apron Open



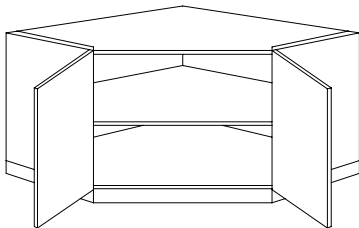
190

- Storage Apron Open



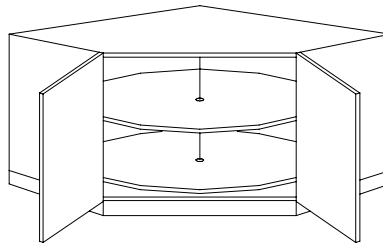
191

- Storage Apron Open



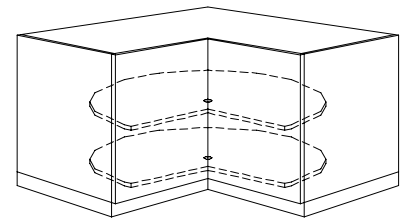
186

- Corner
- Specify Side Depth
- Specify Back Scribe Space



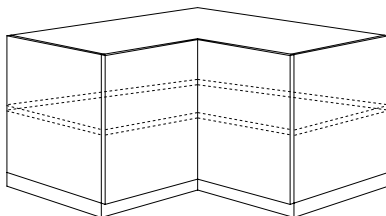
196

- Corner / Lazy Susan
(hardware not included)
- Specify Side Depth
- Specify Back Scribe Space



197

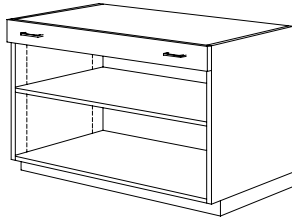
- Corner / Lazy Susan
(hardware not included)
- Specify Side Depth
- Specify Back Scribe Space



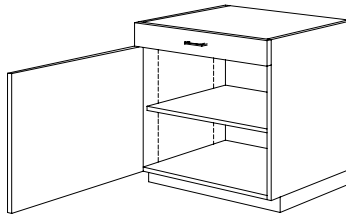
198

- Corner
- Specify Side Depth
- Specify Back Scribe Space

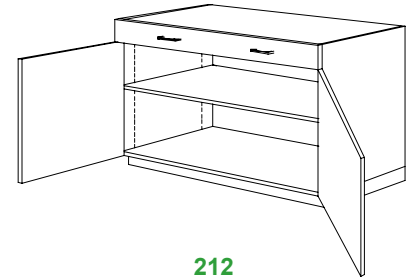
200 SERIES - Base Cabinets with Drawers



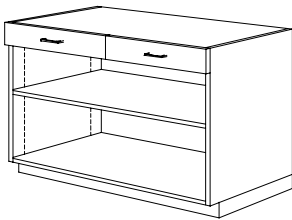
210
Open, Single Drawer



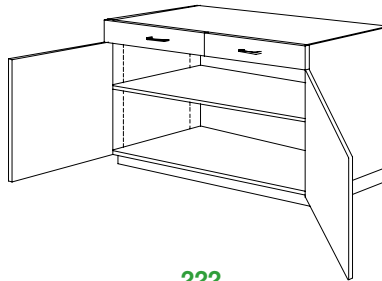
211



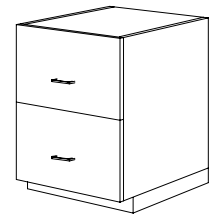
212



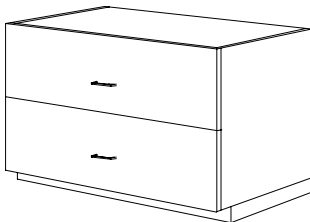
220
Open, Two Drawers



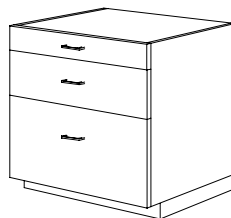
222
Two Drawers



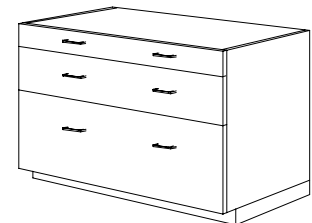
223



224

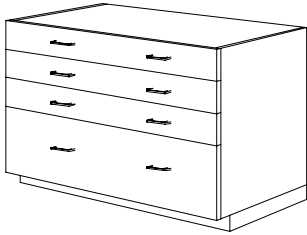


230
Specify Drawer Heights

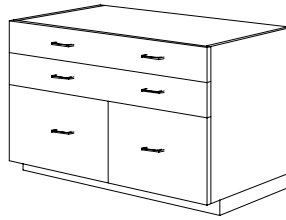


231
Specify Drawer Heights

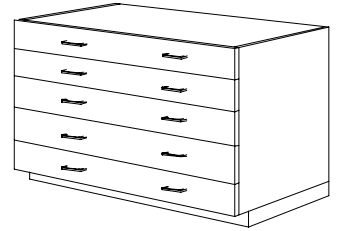
200 SERIES - Base Cabinets with Drawers



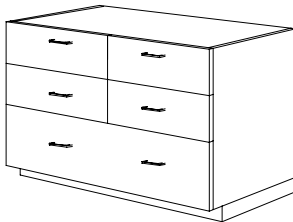
240
Specify Drawer Heights



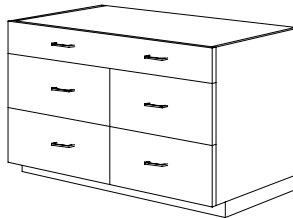
242
Specify Drawer Heights



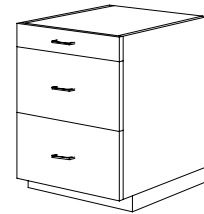
250



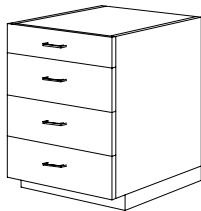
251



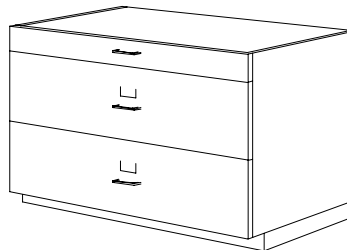
252



253



254
Specify Drawer Heights

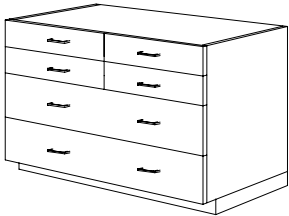


255
Specify Drawer Heights



260
Equal Drawer Heights

200 SERIES - Base Cabinets with Drawers



261

Specify Drawer Heights

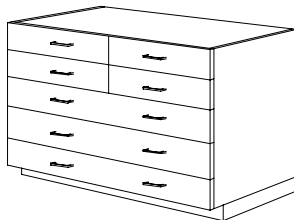


262



270

Equal Drawer Heights



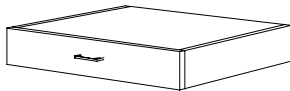
271

Specify Drawer Heights

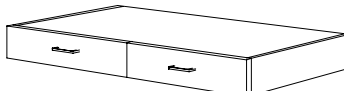


272

Specify Drawer Heights

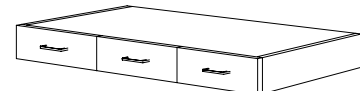


290



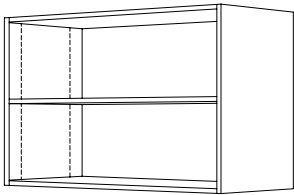
291

Drawer Apron

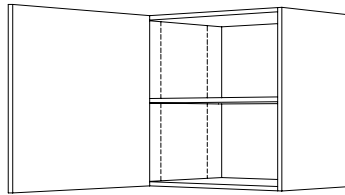


292

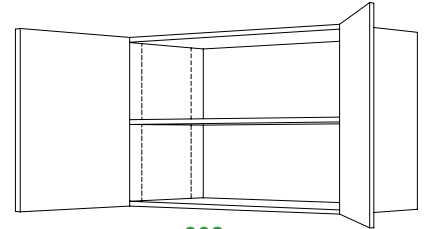
Drawer Apron



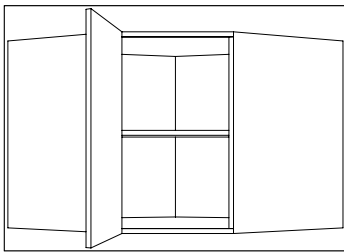
300
Open



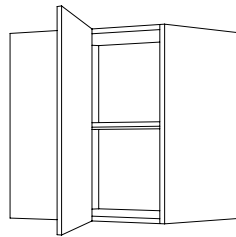
301
Single Door



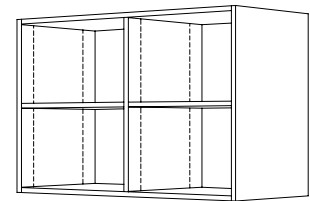
302
Double Door



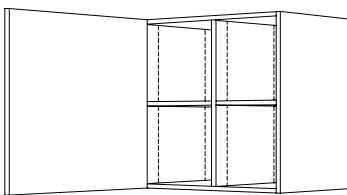
308
Specify 45° or 90° L-Shape Corner
Specify Side Depth
Specify Back Scribe Space



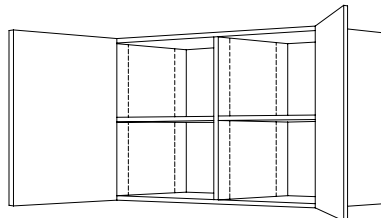
309
Blind Corner
Specify Blind Panel Width
Specify Blank Panel Side (LH or RH)



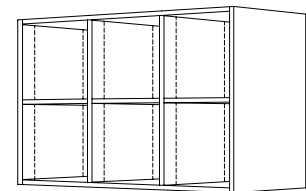
310
Open



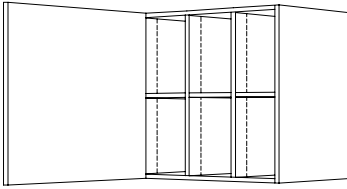
311
Single Door



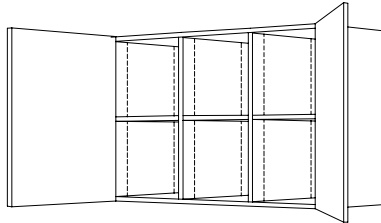
312



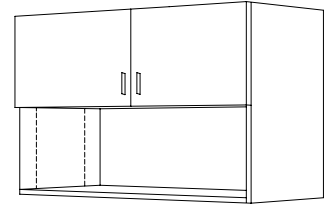
320
Open



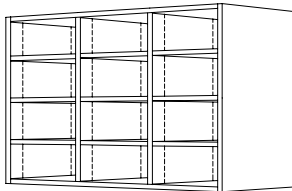
321
Single Door



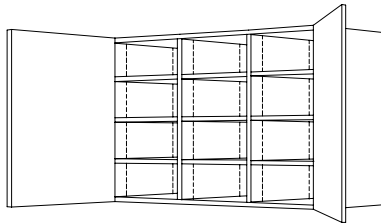
322
Double Door



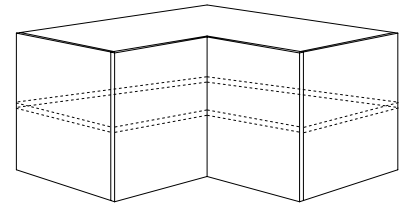
326
Specify Bottom Edge of Doors
Fixed Shelf is flush with doors



340
open

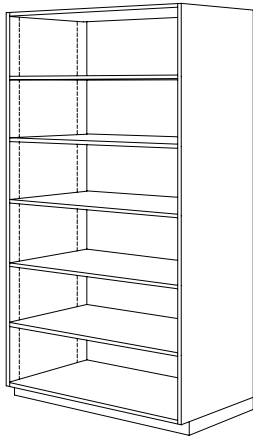


342
Double Door

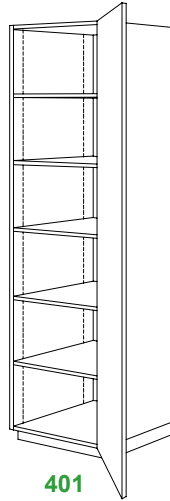


398
90° Corner / Upper
Specify Side Depth
Specify Back Scribe Space

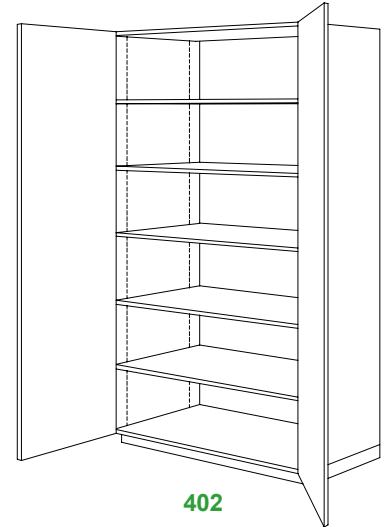
400 SERIES - Tall Storage Cabinets



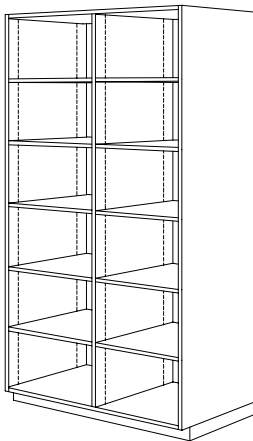
400
No Doors



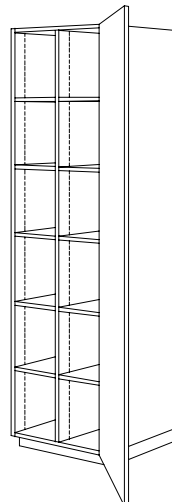
401
Single Door



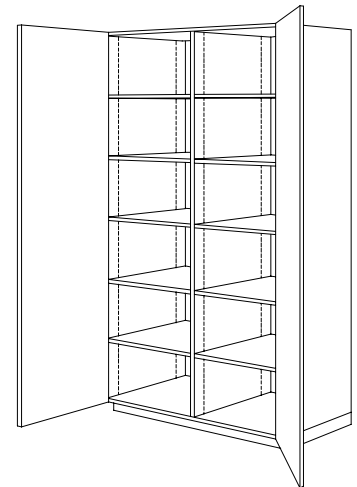
402
Double Door



410
No Doors

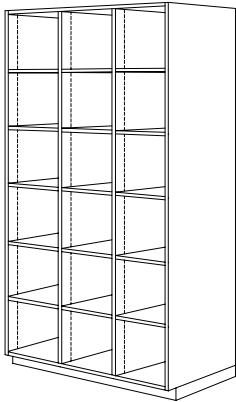


411
Single Door

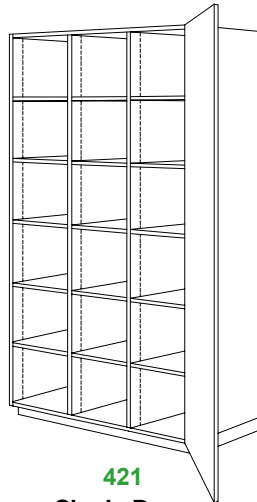


412
Double Door

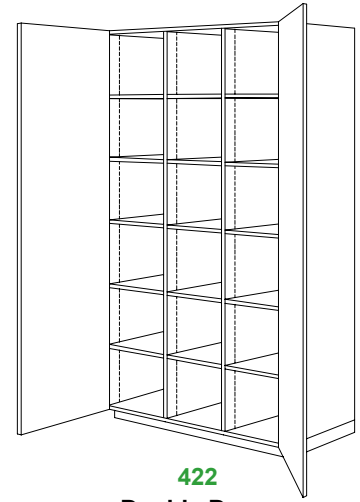
400 SERIES - Tall Storage Cabinets



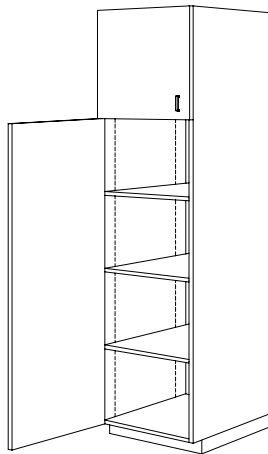
420



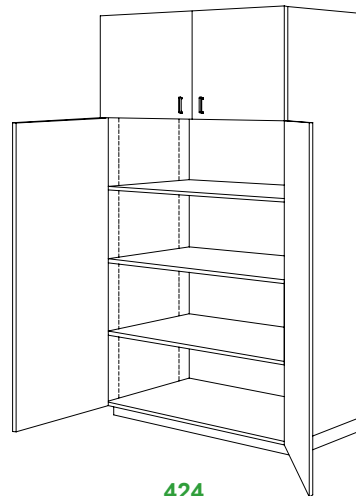
421
Single Door



422
Double Door

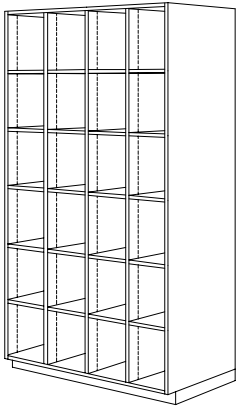


423
Split Height
Specify Bottom Door Height

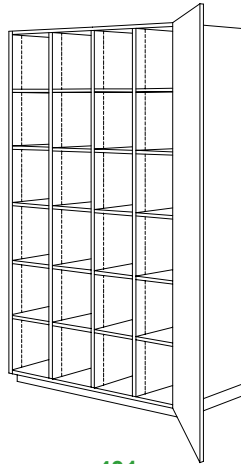


424
Specify Split Height
Specify Bottom Door Height

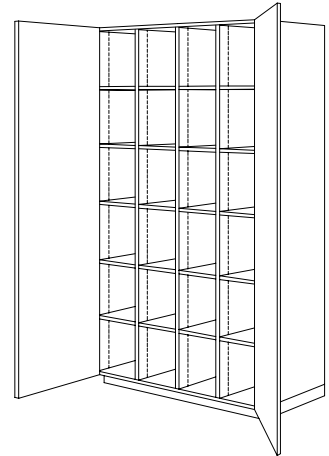
400 SERIES - Tall Storage Cabinets



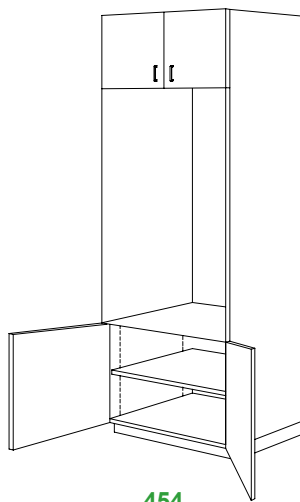
430
No Doors



431
Single Door



432
Double Door



454

Specify Bottom of Cabinet to
Bottom of Oven Opening
Specify Oven Opening Height
Specify Doors or Drawer Below